

Click2Enter Tools V4 With Tera Term V4.78 Programming Software



C2E Tools V4

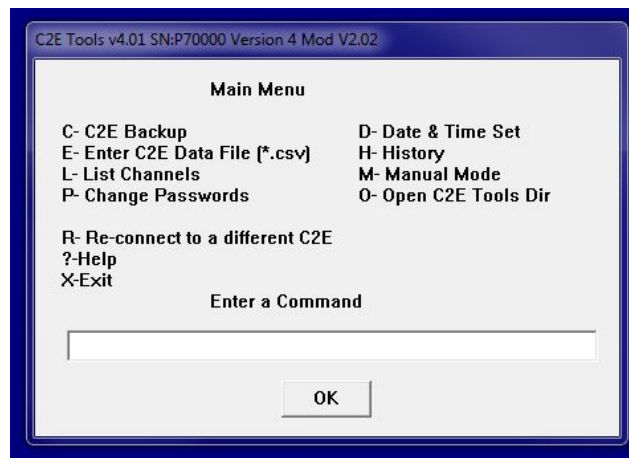
The C2E Tools V4 with Tera Term V4.78 replaces the original C2E Tools V1 installer program. This version of C2E Tools will program both the new 100 channel capacity model Click2Enter-I.V4 and the older 50 channel capacity models. The only difference will be the interface cable for the new Click2Enter-I.V4, which uses a standard USB to MINI cable. Please follow the steps below in order to install and use the new software:

STEP 1: Download and install the Tera Term V4.78 NOTE: During program installation, when prompted, choose the “Compact Installation” feature. Once you have successfully installed this program move onto the next step:

STEP 2: Download the new C2E Tools V4 installer file. This program is stored in Zip format for downloading. Extract the program before Installing. Once saved on your computer click on the file titled **c2etoolsv403.msi** to install. Once you have successfully installed this program move onto the next step:

STEP 3: The last step is to install the USB cable drivers for your particular Windows operating system. This file is in ZIP format, and once saved on your computer click on the ZIP file to view the contents to load the proper driver for your computer:

STEP 4: To program a Click2Enter click on the C2E Tools V4 icon and follow the instructions (see Menu below):



Download Master 100 Channel CSV programming data sheet here: (link to auto download file here)

Always store the CSV programming data sheets in the following folder:

